

Dell™ D/Dock

/



:



:



:

© 2003 Dell Computer Corporation.

Dell Computer Corporation

: Dell, DELL

Dell Computer Corporation

. Dell Computer Corporation

PD01X

2003 1 P/N J0836 Rev. A00

Dell™ D/Dock

- _____
- _____
- _____
- _____
- _____
- _____

- PCI _____
- _____
- D/Dock _____
- Dell _____
- _____



:

D/Dock

•

•



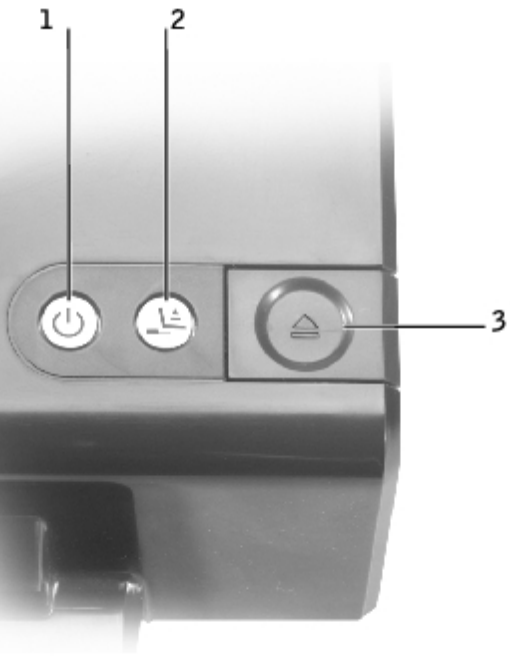
:

Dell D/Dock

Dell D



:



1	_____	3	_____
2	_____		

—

:

- —
- —
- —

—

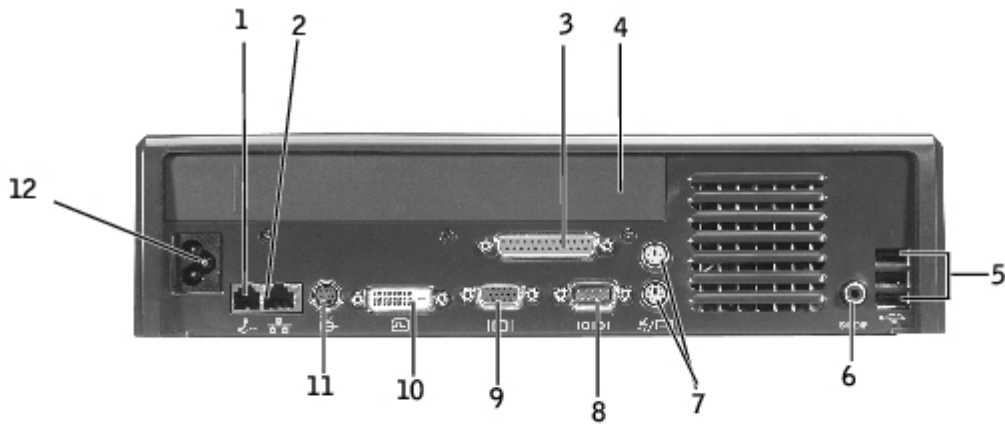
—

—

—

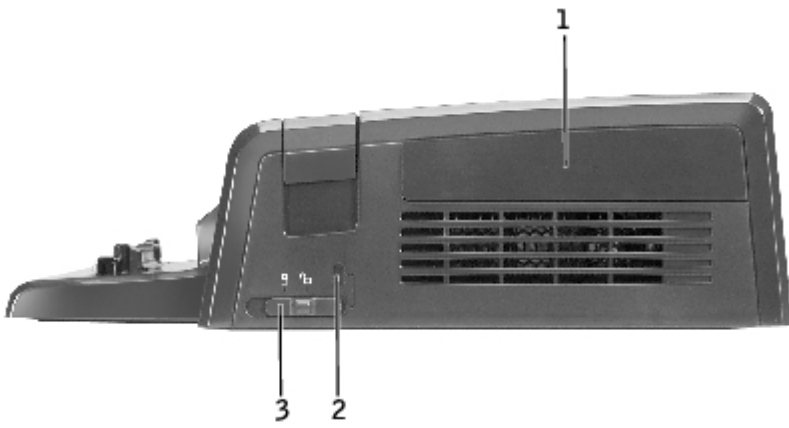


:



1	RJ-11	7	PS/2 (2)
2	RJ-45	8	S-video
3	PCI	9	TV
4	PCI	10	VCR
5	USB 2.0 (3)	11	S-video TV
6	S/PDIF	12	AC

	RJ-11	—							
	RJ-45	—							
	S	TV	—	S	TV , VCR				
			—						
			—	VGA					
	PS/2	(2)	—		PS/2			PS/2	PS/2
	S/PDIF	—		(S/PDIF)				CD	PS/2
	USB 2.0	—		USB 2.0			3	USB	



1	PCI _____
2	_____
3	_____



:

—

()

(PCI)

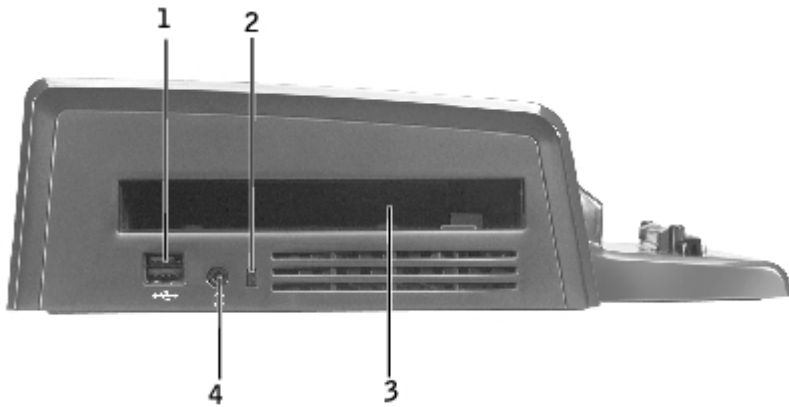
—

PCI

—

PCI

"PCI _____"



1	Dell D/Bay <u>USB</u> _____
2	_____
3	_____
4	_____

—

(" _____ ") .

Dell D

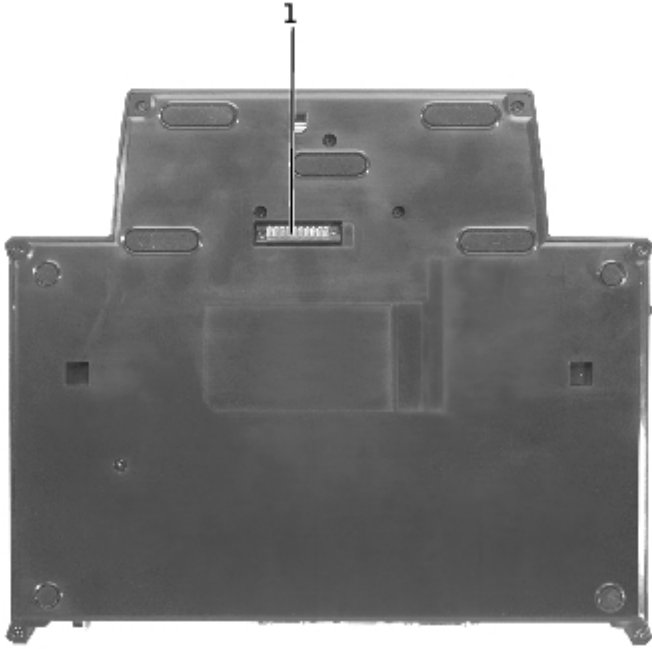
USB

— Dell D/Bay

USB 1.0

2.0

(" _____ ").



:

1	_____
---	-------

D/Dock



:



:

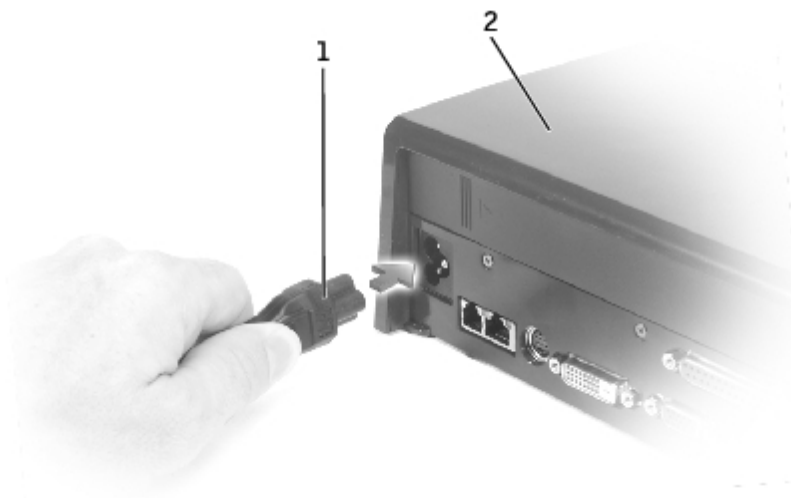
PCI



:

1.

2. AC



1	AC
2	

3. ()

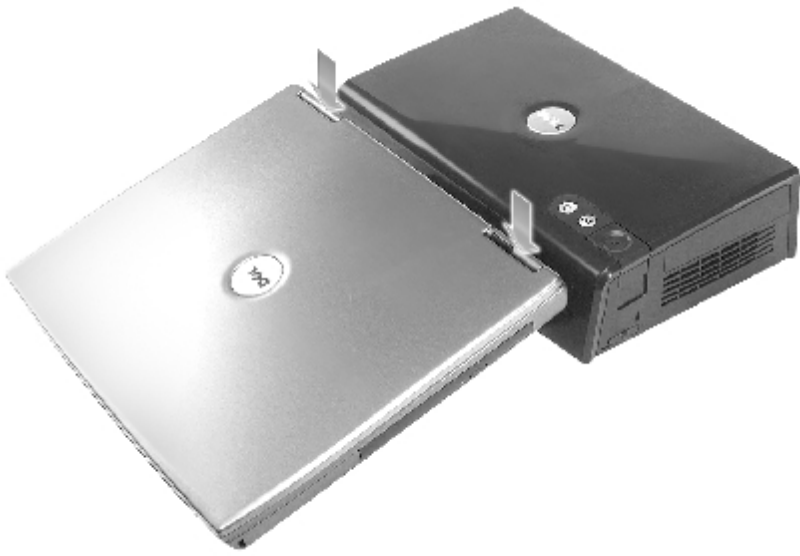
4. ().

5. .



1	
2	
3	
4	

6. DELL



↓ :

7.

8.

✎ :

_____"))

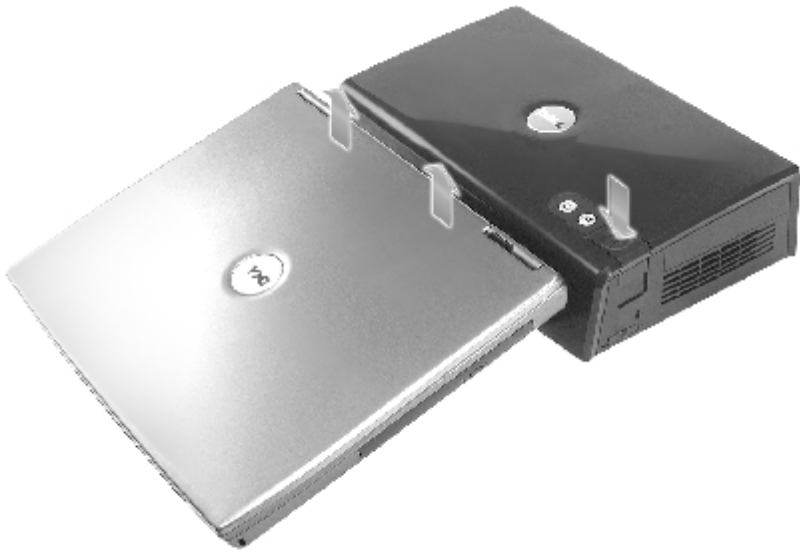
("_

✎ :

9.

10.

("_____"))



:



:

- 1.
- 2.



:

D/Dock



:

- 1.
- 2.

o

. 2 ~ 4

o

3 4

- 3.)
- 4. (. . . .)
- 5.

PCI

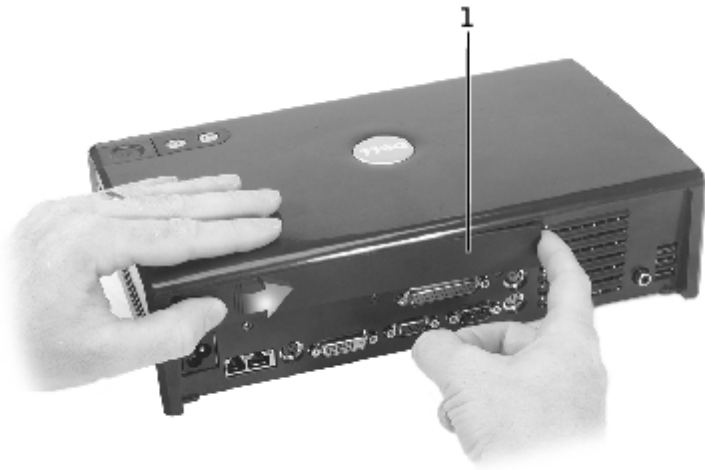
PCI(Peripheral Component Interconnect)

 : 3.3 5.0V, PCI 1



:

- 1.
- 2.
- 3. AC
- 4.
- 5. PCI :



1	PCI
---	-----

PCI

- 6. PCI :



1	
2	PCI

7. PCI



8.

9. PCI

PCI

10. PCI

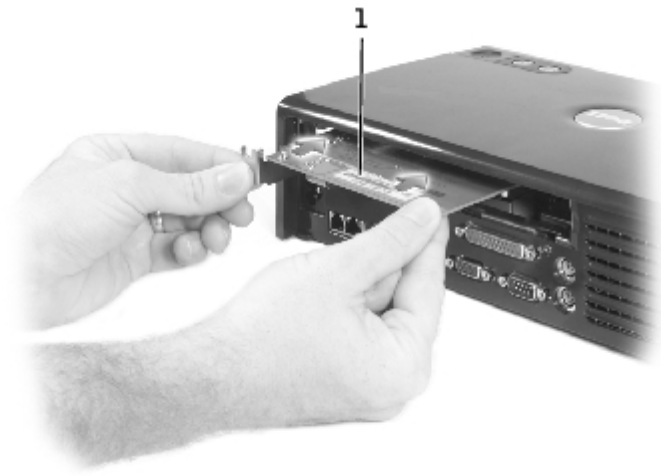
:

 : Dell

PCI

. Dell

PCI



1	PCI
---	-----

a. PCI PCI

b.

11. 7 PCI

12. PCI

13. 5 PCI

14. AC 4

15.

16.

17. PCI (Dell PCI

CD

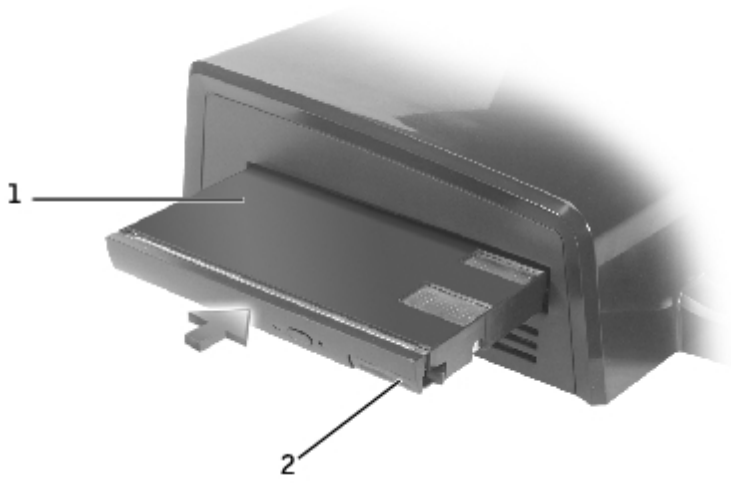
D/Dock

D



:

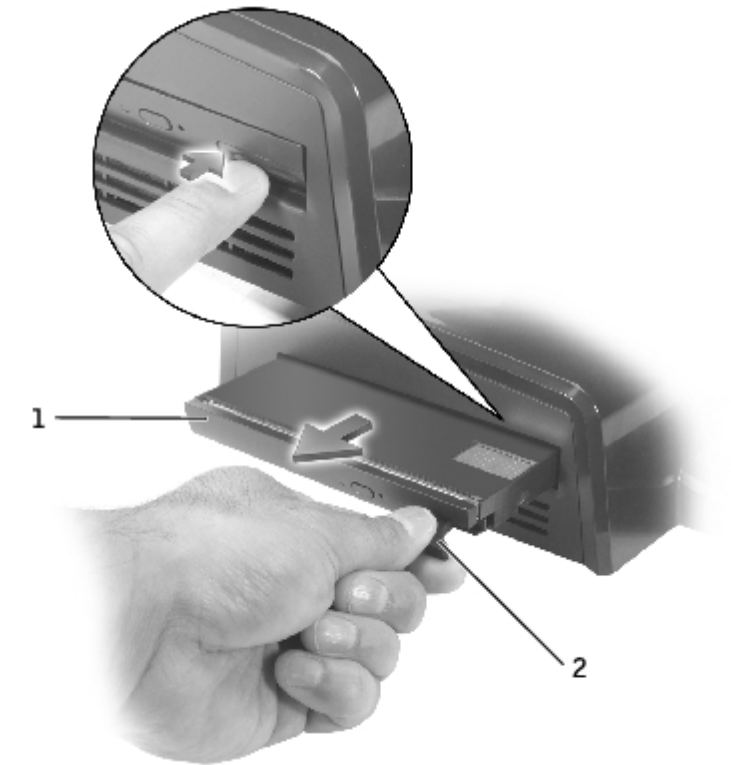
1.



1	
2	

2.

3.



1	
---	--

2	
---	--

1.

2.

D/Dock



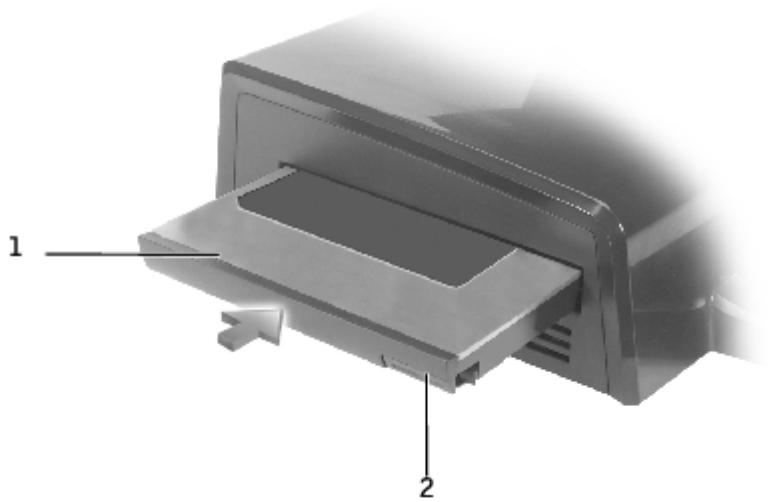
:

D/Dock

1.

2. D

D/Dock

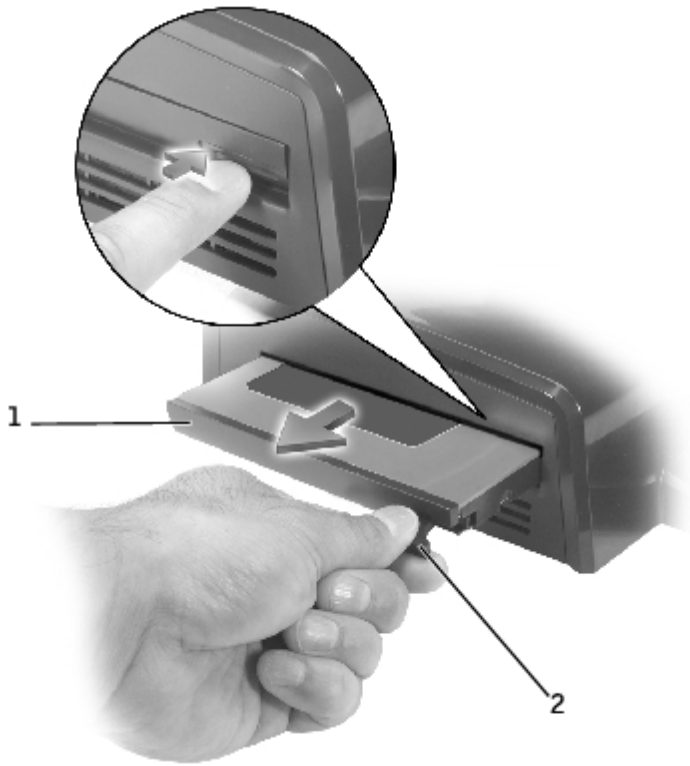


1	
2	

1

80%

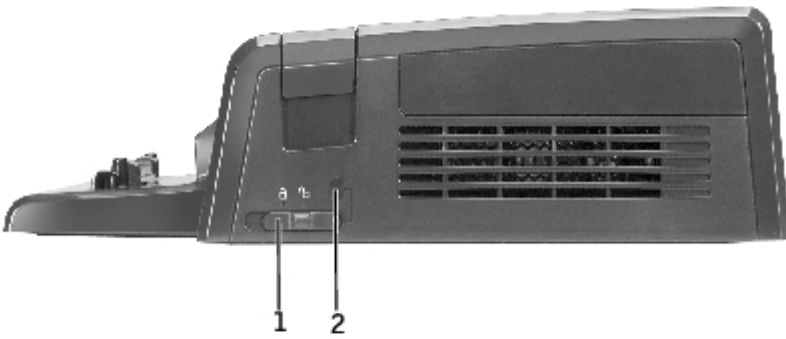
3.



1	
2	

D/Dock

- PCI



1	
2	

-

Dell

Dell

Serial/Infrared Ports

USB

USB

Dell

	70mm(2.76)
	160mm(6.30)
	312mm(12.28)

AC	
	100-240VAC, 50-60Hz
	2.0A

I/O	
(DTE)	9x7f 1 , 16550 , 16
	25 , ECP 1
PS/2	6 DIN 2
USB	4 , USB 2.0 4 : USB 3 , USB 1
	/
	S/PDIF
:	
VGA	15 1
S TV	7 DIN 1
DVI(Digital Video Interface)	24 1
	RJ-45 1 , 10/100/1000GB Ethernet
	RJ-11 1
()	1
PCI	32 , 33MHz 1

Dell™ D/Dock

MIC ()

Dell™

- A
- B

I/O(Input/Output)

ITE(Information Technology Equipment)

Dell

EMC Dell accessories.us.dell.com/sna/category.asp?category_id=4117 Dell

Dell

B

EMC/EMI

A

MIC ()

(Dell) Information and Communications) A

(A B)

MIC "(A)", B "(B)"

(Dell)

MIC(Ministry of

: MIC

- A
- B

A

기종별	사용자안내문
A급 기기 (업무용 정보통신기기)	이 기기는 업무용으로 전자파적합등록을 한 기기이오니 판매자 또는 사용자는 이 점을 주의하시기 바라며 만약 잘못 판매 또는 구입하였을 때에는 가정용으로 교환하시기 바랍니다.

MIC A

A



1. 기기의 명칭(모델명):
2. 인증번호:(A)
3. 인증받은 자의 상호:
4. 제조년월일:
5. 제조자/제조국가:

B

기종별	사용자 안내문
B급 기기 (가정용 정보통신기기)	이 기기는 가정용으로 전자파적합등록을 한 기기로서 주거지역에서는 물론 모든 지역에서 사용할 수 있습니다.

MIC B

B



1. 기기의 명칭(모델명):PD01X (D/Dock Expansion Station)
2. 인증번호:
3. 인증받은 자의 상호:테크프론트(상하이)컴퓨터 (주)
4. 제조년월일:
5. 제조자/제조국가: Tech-Front (Shanghai) Computer Co. Ltd. / China
테크프론트(상하이)컴퓨터 (주) 중국

Dell™ D/Dock

A B C D E F G H I K L M N P R S T U V W X Z

— CD, DVD DVD+RW CD
, DVD , CD-RW , CD-RW/DVD
— x X y X z

NIC (Network Interface Controller)

PC

(MS)
.hlp .chm

— APR

CPU(Central Processing Unit)

(RAM, ROM,).

RAM

RAM

TV

, PC , 3

Dell Travellite™

. Windows

1 8

Windows

. Windows

, CD

(MHz)

I/O

. LPT

CD

CD
CD

CD

Resource CD

CD

. Windows

, X y X z

x X y x

) () (

Dell (support.dell.com) Dell

AC 20%

Windows setup.exe install.exe

BIOS System Setup

3.5

Windows ()

• , CD DVD

Hz ()

IR

AC

()

Windows

I/O

L1

L2

(MHz)

Windows

(,)

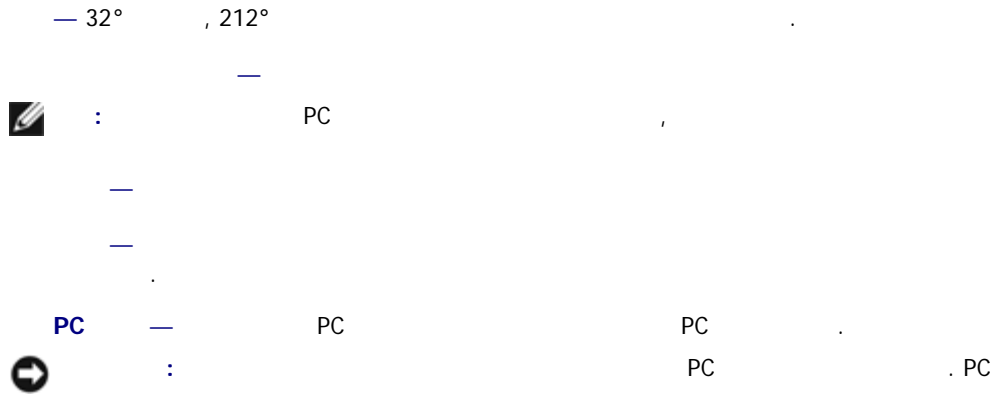
Dell™

Dell

1

(,)

BIOS,



A

AC — (Alternating Current) — AC

ACPI — (Advanced Configuration and Power Interface) —
Microsoft® Windows®

AGP — (Accelerated Graphics Port) —
AGP

APR — (Advanced Port Replicator) —

ASF — (Alert Standards Format) —
ASF

B

BIOS — (Basic Input/Output System) —
)

Bluetooth™ — (9m[29 feet])

bps — (bits per second) —

BTU — (British Thermal Unit) —

C

System Setup

C — (Celsius) — 0° , 100°

CD-R — CD(CD Recordable) — CD . CD-R

CD-RW — CD(CD ReWritable) — CD . CD-RW
()

CD-RW — CD CD-RW(CD) CD-R(CD) . CD-RW
CD-R

CD-RW/DVD — CD DVD , CD-RW(CD) CD-R()
CD-RW CD-R

CD — (Compact Disc) —

CD — CD

CD — CD . CD CD

COA — (Certificate Of Authenticity) — Windows
COA **ID**

CRIMM — (Continuity Rambus In-line Memory Module) —
RIMM

D

DDR SDRAM — SDRAM(Double-Data-Rate SDRAM) —
SDRAM

DIN — DIN(Deutsche Industrinorm-Norm) 6 PS/2

DMA — (Direct Memory Access) — RAM

DMTF — (Distributed Management Task Force) —

DRAM — (Dynamic Random-Access Memory) —

DSL — (Digital Subscriber Line) —

DVD — (Digital Versatile Disc) — DVD CD DVD
CD

DVD — DVD CD

DVD — DVD . DVD

DVD+RW — DVD(DVD ReWritable) — DVD . DVD+RW
() (DVD+RW DVD-RW)

DVD+RW — DVD CD DVD+RW(DVD)

DVI — (Digital Video Interface) — , DVI

E

ECC — (Error Checking and Correction) —

ECP — (Extended Capabilities Port) — EPP ECP

EIDE — (Enhanced Integrated Device Electronics) — CD IDE

EMI — (ElectroMagnetic Interference) —

ENERGY STAR® —

EPP — (Enhanced Parallel Port) —

ESD — (ElectroStatic Discharge) — ESD

F

FCC — (Federal Communications Commission) —

FSB — (Front Side Bus) — RAM

FTP — (File Transfer Protocol) —

G

G — (Gravity) —

GB — (GigaByte) — 1024MB(1,073,741,824)
1,000,000,000

GHz — (GigaHertz) — 10 Hz 1000MHz
GHz

GUI — (Graphical User Interface) — GUI
Windows

H

HTML — (HyperText Markup Language) —

HTTP — (HyperText Transfer Protocol) —

Hz — (Hertz) — 1 (kHz), (MHz),
(GHz) (THz)

I

I/O — / (Input/Output) — I/O

I/O — RAM ()

IC — (Integrated Circuit) —

IC — (Industry Canada) — FCC

IDE — (Integrated Device Electronics) — CD

IEEE 1394 — Institute of Electrical and Electronics Engineers, Inc. — DVD IEEE 1394

IRQ — (Interrupt ReQuest) —
IRQ 2 IRQ

ISP — (Internet Service Provider) —
ISP

K

KB — (KiloByte) — 1024 1000

Kb — (Kilobit) — 1024

kHz — (kiloHertz) — 1000Hz

L

LAN — (Local Area Network) — LAN LAN WAN(Wide Area Network)

LCD — (Liquid Crystal Display) —

LED — (Light-Emitting Diode) —

LPT — (Line Print Terminal) —

M

MB — (MegaByte) — 1,048,576 1MB 1024KB
1,000,000

Mb — (Megabit) — 1024Kb

MB/sec — (Megabytes per second) — 100

Mbps — (Megabits per second) — 100

MHz — (MegaHertz) — 100
MHz

ms — (millisecond) — 1/1000 ms

N

NIC —

ns — (nanosecond) — 1/10

NVRAM — (NonVolatile Random Access Memory) —
NVRAM

P

PC — PCMCIA

I/O

PC

PCI — (Peripheral Component Interconnect) — PCI
32 64

PCMCIA — (Personal Computer Memory Card International Association) — PC

PIN — (Personal Identification Number) —

PIO — / (Programmed Input/Output) —

POST — (Power-On Self-Test) — BIOS
POST

PS/2 — (Personal System/2) — PS/2

PXE — (Pre-boot eXecution Environment) —
WfM(Wired for Management)

R

RAID — (Redundant Array of Independent Disks) —
RAID PC RAID 0, 3, 5 :
• 0: 0
• 3: 0
• 5:

RAM — (Random-Access Memory) — RAM

readme — readme

RFI — (Radio Frequency Interference) — 10kHz ~100,000MHz

ROM — (Read-Only Memory) — ROM
RAM ROM

RPM — (Revolutions Per Minute) — 1 rpm

RTC — (Real Time Clock) —

RTCST — (Real-Time Clock Reset) —

S

S TV — TV

S/PDIF — Sony/Philips (Sony/Philips Digital Interface) —

ScanDisk — Microsoft . ScanDisk

SDRAM — (Synchronous Dynamic Random-Access Memory) —
DRAM

SVGA — (Super-Video Graphics Array) — SVGA 800
x 600 1024 x 768

SXGA — (Super-eXtended Graphics Array) — 1280 x 1024

SXGA+ — (Super eXtended Graphics Array plus) — 1400 x
1050

T

TAPI — (Telephony Application Programming Interface) — Microsoft Windows

U

UPS — (Uninterruptible Power Supply) —
UPS UPS

USB — (Universal Serial Bus) — USB
4 . USB

UTP — (Unshielded Twisted Pair) —

UXGA — (Ultra eXtended Graphics Array) — 1600 x 1200

V

V — (Volt) — . 1V 1A 1ohm

W

W — (Watt) — . 1W 1V 1A

Whr — (Watt-Hour) — . 66Whr
66W 1 33W 2

X

XGA — (eXtended Graphics Array) — 1024 x 768

Z

ZIF — (Zero Insertion Force) —

Zip — . Zip . Zip . **.zip** . Zip
.exe

Zip — Zip 3.5 100MB Iomega Corporation
Zip

